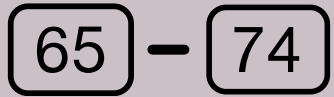


PHASE 1C VACCINE

Worcester County Health Department is moving forward with vaccination of:



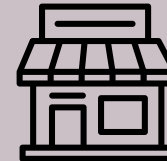
MARYLAND
RESIDENTS 65-74
YEARS OLD



ESSENTIAL WORKERS
IN LAB SERVICES &
MANUFACTURING



ESSENTIAL
WORKERS IN U.S.
POSTAL SERVICE &
PUBLIC TRANSIT



ESSENTIAL WORKERS IN
GROCERY STORES
FOOD/AGRICULTURE
PRODUCTION



HEALTHCARE WORKERS
NOT COVERED IN
PHASE 1A

- Tuesdays – Worcester County Recreation Center, Snow Hill
- Thursdays – West Ocean City Park & Ride (Drive-Through)
- Fridays – Newtown Park, Pocomoke (Drive-Through)
- Saturdays – Worcester County Health Department, Snow Hill

For appointment dates and times, visit [marylandvax.org](https://www.marylandvax.org)

Online registration is required through the state of Maryland's COVID-19 vaccine scheduling website. To register, go to www.marylandvax.org. Vaccination registration will be made available as vaccine supply allows. Not all clinics will be available to register. Please check for new clinics regularly, vaccine supply arrives weekly.

Anyone who is not comfortable filling out web forms can seek assistance from a friend or family member to complete the registration process. If you are unable to get assistance, please call 667-253-2140 and someone will help you to register.

