



DEPARTMENT OF  
ENVIRONMENTAL PROGRAMS

**Worcester County**

GOVERNMENT CENTER  
ONE WEST MARKET STREET, ROOM 1306  
SNOW HILL, MARYLAND 21863  
TEL: 410.632.1220 / FAX: 410.632.2012

LAND PRESERVATION PROGRAM  
STORMWATER MANAGEMENT  
SEDIMENT AND EROSION CONTROL  
SHORELINE CONSTRUCTION  
AGRICULTURAL PRESERVATION  
ADVISORY BOARD

WELL & SEPTIC  
WATER & SEWER PLANNING  
PLUMBING & GAS  
CRITICAL AREAS/FORESTRY  
COMMUNITY HYGIENE

September 20, 2024

This notification is to advise you that the Department has received and is presently reviewing the following request for a shoreline construction project:

Scott Stark– Request No. 2024-081 - Request to restore and enhance tidal wetlands within approximately 35 acres of low and high marsh by creating 2320 linear feet, with a maximum width of 3'x1' deep of first new order channels; clean out 233 ft of existing tidal ditch; fill 3039 linear feet of existing ditch with approx. 1013 cubic yard of excavated material and restore approx. 125,855 sq ft of tidal wetlands by thin layering approx. 5431 cubic yds of excavated material to a max elevation of 1.5 ft NAVD88 in area of previous vegetated tidal marsh that have concerted to open soil and plan with tidal marsh vegetation. The purpose of project is to provide drainage of ponded water within the marsh that is leading to marsh inundation and fragmentation and to provide tidal exchange. This project is located at 9344 Langmaid Rd, Newark, also known as Tax Map 49, Parcel 28, Fourth Tax District of Worcester County, Maryland.

The Department in considering this application will make specific findings of fact with regard to the environmental impact, navigational impact, recreational potential, commercial benefit to Worcester County, impact of the proposed construction upon the surrounding neighborhood and upon property values therein, and any other pertinent issues. Approval from the Department does not guarantee approval from any other applicable regulatory agencies.

**If you have an interest which may be adversely affected by the issuance of this permit, you are requested to notify this Department in writing within fifteen (15) calendar days which will end on October 5, 2024.**

Sincerely,

Brandy Whitlock  
Environmental Inspector

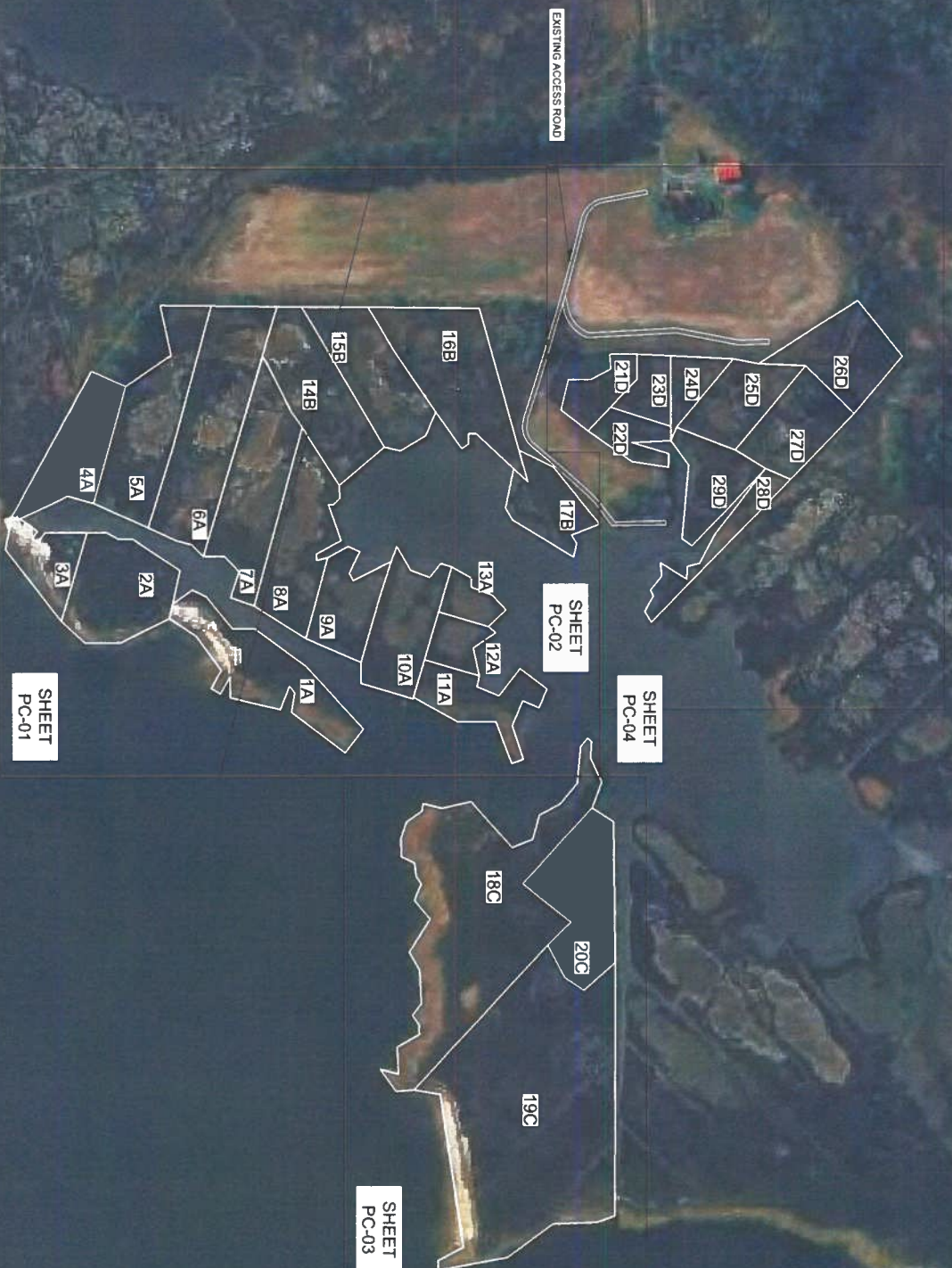
cc: Interested Parties  
David Bradford, Deputy Director







Cell
1
2
3
4
5
6
7
8
9
10
11
12
13
14
15
16
17
18
19
20
21
22
23
24
25
26
27
28
29

[illegible]

© 2022 Microsoft Corporation © 2022 Maxar © CNES (2022) Distribution Airbus DS

#

2

SALT MAR  
STARK  
EXIST



U.S. FISH AND WILDLIFE SERVICE  
CHESAPEAKE BAY FIELD OFFICE  
PARTNERS FOR FISH AND WILDLIFE  
PROGRAM  
177 ADMIRAL COCHRANE DRIVE  
ANNAPOLIS, MD 21401  
TEL: (703) 501-0593



 **STRAUGHAN**  
ENVIRONMENTAL

10245 OLD COLUMBIA ROAD  
COLUMBIA, MD 21046  
TEL 301.362.9200  
FAX 301.362.9245  
info@straughanenvironmental.com

 **SOVEREIGN  
CONSULTING INC.**  
science service solutions

50 WEST WELSH POOL ROAD, SUITE 6  
EXTON, PA 19341  
TEL. 610 324 8124  
WWW.SOVCORP.COM



WESTERN MARYLAND RESOURCE  
CONSERVATION AND  
DEVELOPMENT COUNCIL, INC.  
1260 MARYLAND AVE, SUITE 103  
HAGERSTOWN, MD 21740  
TEL. 301.671.1800  
[www.wmrcd.org](http://www.wmrcd.org)



Cell	Group
1	A
2	A
3	A
4	A
5	A
6	A
7	A
8	A
9	A
10	A
11	A
12	A
13	A
14	B
15	B
16	B
17	B
18	C
19	C
20	C
21	D
22	D
23	D
24	D
25	D
26	D
27	D
28	D
29	D



LEGEND

CELL BOI

##

CELL NUJ  
AND GRC

EX-P

EX-L

EX-F

EX-S

EX-F

EX-L

EX-V

EX-L

PR-F

PR-F

PR-F

PR-F

PR-F

PR-F

PR-F

PR-F

PR-F

PR-F

PR-F

PR-F

PR-F

PR-F

PR-F

PR-F

PR-F

PR-F

PR-F

PR-F

PR-F

PR-F

PR-F

PR-F

PR-F

PR-F

PR-F



© 2022 Microsoft Corporation © 2022 Maxar ©CNES (2022) Distribution

REVISIONS

BY	NO	REVISIONS	DATE	SCALE	DESIGNED BY	CHECKED BY	DATE
LT	1	REVISED TABLES AND DETAILS. ADDED PERMITTING QUANTITIES APPENDIX	12/01/20	1"=100'	JOB-HV	JOB-HV	03/27/24
LT	2	UPDATED DESIGN TO INCLUDE HUMMOCK ZONE AND EBC DESIGN	05/16/24		JOB-HV	JOB-HV	05/16/24
LT	3	UPDATED HUMMOCK ZONE DETAIL AND NOTES. ADDED WMI WETLAND LIMITS			JOB-HV	JOB-HV	
LT	4				JOB-HV	JOB-HV	
LT	5				JOB-HV	JOB-HV	
LT	6				JOB-HV	JOB-HV	
LT	7				JOB-HV	JOB-HV	
LT	8				JOB-HV	JOB-HV	
LT	9				JOB-HV	JOB-HV	
LT	10				JOB-HV	JOB-HV	
LT	11				JOB-HV	JOB-HV	
LT	12				JOB-HV	JOB-HV	
LT	13				JOB-HV	JOB-HV	
LT	14				JOB-HV	JOB-HV	
LT	15				JOB-HV	JOB-HV	
LT	16				JOB-HV	JOB-HV	
LT	17				JOB-HV	JOB-HV	
LT	18				JOB-HV	JOB-HV	
LT	19				JOB-HV	JOB-HV	
LT	20				JOB-HV	JOB-HV	
LT	21				JOB-HV	JOB-HV	
LT	22				JOB-HV	JOB-HV	
LT	23				JOB-HV	JOB-HV	
LT	24				JOB-HV	JOB-HV	
LT	25				JOB-HV	JOB-HV	
LT	26				JOB-HV	JOB-HV	
LT	27				JOB-HV	JOB-HV	
LT	28				JOB-HV	JOB-HV	
LT	29				JOB-HV	JOB-HV	
LT	30				JOB-HV	JOB-HV	
LT	31				JOB-HV	JOB-HV	
LT	32				JOB-HV	JOB-HV	
LT	33				JOB-HV	JOB-HV	
LT	34				JOB-HV	JOB-HV	
LT	35				JOB-HV	JOB-HV	
LT	36				JOB-HV	JOB-HV	
LT	37				JOB-HV	JOB-HV	
LT	38				JOB-HV	JOB-HV	
LT	39				JOB-HV	JOB-HV	
LT	40				JOB-HV	JOB-HV	
LT	41				JOB-HV	JOB-HV	
LT	42				JOB-HV	JOB-HV	
LT	43				JOB-HV	JOB-HV	
LT	44				JOB-HV	JOB-HV	
LT	45				JOB-HV	JOB-HV	
LT	46				JOB-HV	JOB-HV	
LT	47				JOB-HV	JOB-HV	
LT	48				JOB-HV	JOB-HV	
LT	49				JOB-HV	JOB-HV	
LT	50				JOB-HV	JOB-HV	
LT	51				JOB-HV	JOB-HV	
LT	52				JOB-HV	JOB-HV	
LT	53				JOB-HV	JOB-HV	
LT	54				JOB-HV	JOB-HV	
LT	55				JOB-HV	JOB-HV	
LT	56				JOB-HV	JOB-HV	
LT	57				JOB-HV	JOB-HV	
LT	58				JOB-HV	JOB-HV	
LT	59				JOB-HV	JOB-HV	
LT	60				JOB-HV	JOB-HV	
LT	61				JOB-HV	JOB-HV	
LT	62				JOB-HV	JOB-HV	
LT	63				JOB-HV	JOB-HV	
LT	64				JOB-HV	JOB-HV	
LT	65				JOB-HV	JOB-HV	
LT	66				JOB-HV	JOB-HV	
LT	67				JOB-HV	JOB-HV	
LT	68				JOB-HV	JOB-HV	
LT	69				JOB-HV	JOB-HV	
LT	70				JOB-HV	JOB-HV	
LT	71				JOB-HV	JOB-HV	
LT	72				JOB-HV	JOB-HV	
LT	73				JOB-HV	JOB-HV	
LT	74				JOB-HV	JOB-HV	
LT	75				JOB-HV	JOB-HV	
LT	76				JOB-HV	JOB-HV	
LT	77				JOB-HV	JOB-HV	
LT	78				JOB-HV	JOB-HV	
LT	79				JOB-HV	JOB-HV	
LT	80				JOB-HV	JOB-HV	
LT	81				JOB-HV	JOB-HV	
LT	82				JOB-HV	JOB-HV	
LT	83				JOB-HV	JOB-HV	
LT	84				JOB-HV	JOB-HV	
LT	85				JOB-HV	JOB-HV	
LT	86				JOB-HV	JOB-HV	
LT	87				JOB-HV	JOB-HV	
LT	88				JOB-HV	JOB-HV	
LT	89				JOB-HV	JOB-HV	
LT	90				JOB-HV	JOB-HV	
LT	91				JOB-HV	JOB-HV	
LT	92				JOB-HV	JOB-HV	
LT	93				JOB-HV	JOB-HV	
LT	94				JOB-HV	JOB-HV	
LT	95				JOB-HV	JOB-HV	
LT	96				JOB-HV	JOB-HV	
LT	97				JOB-HV	JOB-HV	
LT	98				JOB-HV	JOB-HV	
LT	99				JOB-HV	JOB-HV	
LT	100				JOB-HV	JOB-HV	

SALT MAR:

STARK:

PROPC



U.S. FISH AND WILDLIFE SERVICE  
CHESAPEAKE BAY FIELD OFFICE  
PARTNERS FOR FISH AND WILDLIFE  
PROGRAM  
177 ADMIRAL COCHRANE DRIVE  
ANNAPOLIS, MD 21401  
TEL: (703) 501-4593



10245 OLD COCHRANE ROAD  
ANNAPOLIS, MD 21401  
TEL: 301-362-9245  
FAX: 301-362-9245  
info@straughanenvironmental.com



50 WEST WELSH POOL ROAD SUITE 6  
ERTON, PA 19341  
TEL: 717-333-1234  
WWW.SOVEREIGNCONSULTING.COM

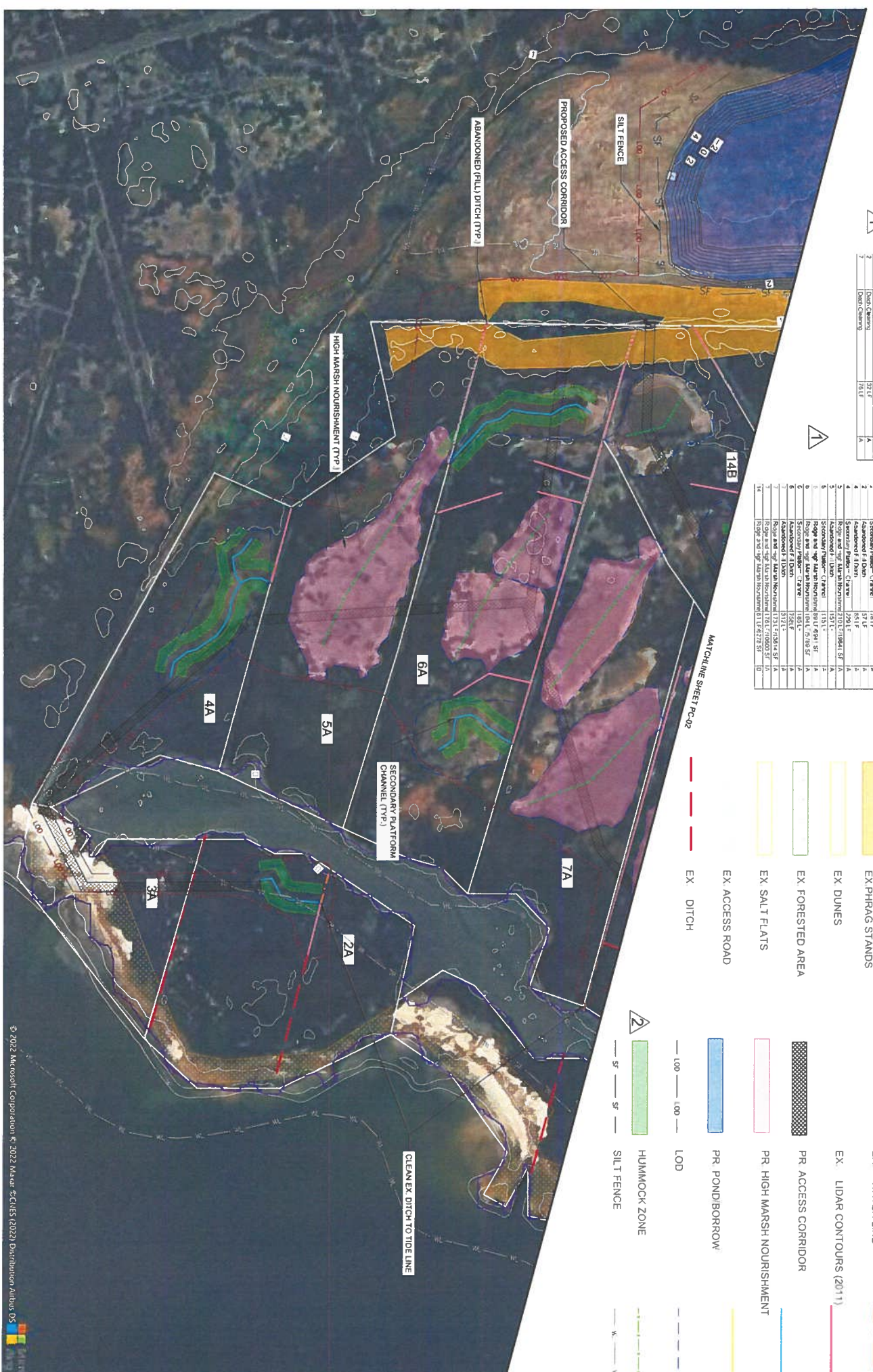


WESTERN MARYLAND RESOURCE  
CONSERVATION AND DEVELOPMENT  
COUNCIL, INC.  
1260 WYOMING AVE. SUITE 103  
HAGERSTOWN, MD 21740  
WWW.WMRCDC.ORG



Call	Proposed Feature	Quantity	Group
1	EX PHRAG STANDS	181.1 F	A
2	EX DUNES	181.1 F	A
3	EX FORESTED AREA	181.1 F	A
4	EX SALT FLATS	181.1 F	A
5	EX ACCESS ROAD	181.1 F	A
6	EX DITCH	181.1 F	A
7	EX WATER LINE	181.1 F	A
8	EX LIDAR CONTOURS (2011)	181.1 F	A
9	PR ACCESS CORRIDOR	181.1 F	A
10	PR HIGH MARSH NOURISHMENT	181.1 F	A
11	PR POND/BORROW	181.1 F	A
12	HUMMOCK ZONE	181.1 F	A
13	SILT FENCE	181.1 F	A
14	CLEAN EX DITCH TO TIDE LINE	181.1 F	A

Call	Proposed Feature	Quantity	Group
1	EX PHRAG STANDS	181.1 F	A
2	EX DUNES	181.1 F	A
3	EX FORESTED AREA	181.1 F	A
4	EX SALT FLATS	181.1 F	A
5	EX ACCESS ROAD	181.1 F	A
6	EX DITCH	181.1 F	A
7	EX WATER LINE	181.1 F	A
8	EX LIDAR CONTOURS (2011)	181.1 F	A
9	PR ACCESS CORRIDOR	181.1 F	A
10	PR HIGH MARSH NOURISHMENT	181.1 F	A
11	PR POND/BORROW	181.1 F	A
12	HUMMOCK ZONE	181.1 F	A
13	SILT FENCE	181.1 F	A
14	CLEAN EX DITCH TO TIDE LINE	181.1 F	A



# LEGEND

EX PHRAG STANDS	EX DUNES	EX FORESTED AREA	EX SALT FLATS	EX ACCESS ROAD	EX DITCH	EX WATER LINE	EX LIDAR CONTOURS (2011)	PR ACCESS CORRIDOR	PR HIGH MARSH NOURISHMENT	PR POND/BORROW	HUMMOCK ZONE	SILT FENCE	CLEAN EX DITCH TO TIDE LINE
-----------------	----------	------------------	---------------	----------------	----------	---------------	--------------------------	--------------------	---------------------------	----------------	--------------	------------	-----------------------------



U.S. FISH AND WILDLIFE SERVICE  
CHESAPEAKE BAY FIELD OFFICE  
PARTNERS FOR FISH AND WILDLIFE  
PROGRAM  
177 ADMIRAL COCHRANE DRIVE  
ANAPOLIS, MD 21401  
TEL: (703) 501-0593



10242 OLD COULDA ROAD  
EDITION, PA 19341  
TEL: 301-362-2900  
FAX: 301-362-2905  
info@straughanconsulting.com

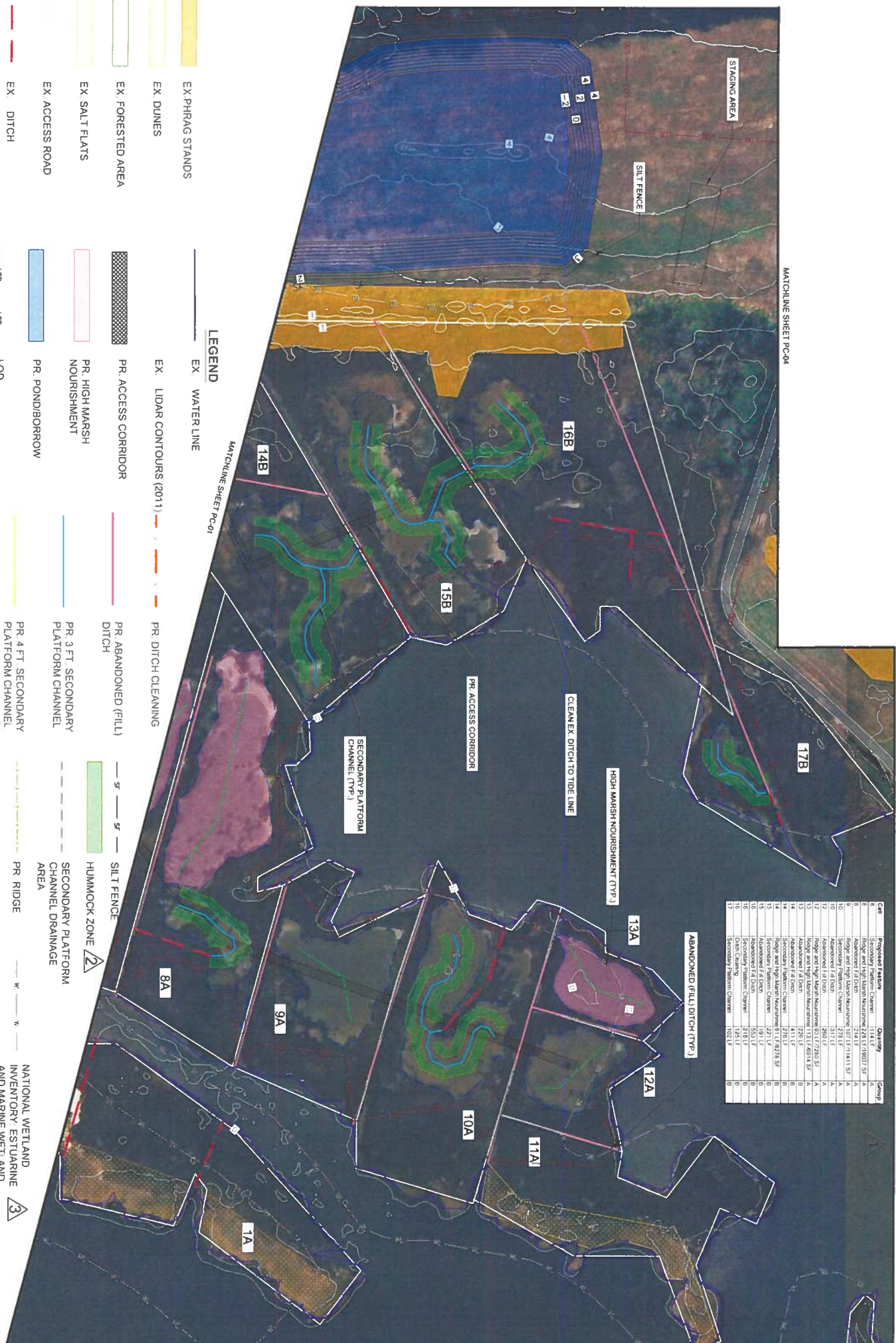


BY	NO	REVISIONS	DATE	SCALE	1"=50'
LT	Δ	REVISED TABLES AND DETAILS ADDED RECOUNTING QUANTITIES APPENDIX	12/01/22	DESIGNED BY	JOB/HA
LT	Δ	UPDATED DESIGN TO INCLUDE HUMMOCK ZONE AND ESC DESIGN	02/27/24	DRAWN BY	JOB/HA
LT	Δ	UPDATED HUMMOCK ZONE DETAIL AND NOTES ADDED WETLAND LIMITS	09/16/24	CHECKED BY	LT

SALT MAF  
STARI  
PROPOSI



Cell	Proposed Feature	Quantity	Group
6	Secondary Platform Channel	114.1 LF	A
7	Abandoned Filled Ditch	114.1 LF	A
8	Abandoned Filled Ditch	114.1 LF	A
9	Ridge and High Marsh Nourishment	107.1 LF x 1.61 SF	A
10	Secondary Platform Channel	328.1 LF	A
11	Abandoned Filled Ditch	260.1 LF	A
12	Ridge and High Marsh Nourishment	93.1 LF x 7.28 SF	A
13	Ridge and High Marsh Nourishment	133.1 LF x 6.01 SF	A
14	Abandoned Filled Ditch	44.1 LF	B
15	Secondary Platform Channel	278.1 LF	B
16	Ridge and High Marsh Nourishment	11.1 LF x 8.78 SF	B
17	Abandoned Filled Ditch	191.1 LF	B
18	Abandoned Filled Ditch	55.1 LF	B
19	Secondary Platform Channel	278.1 LF	B
20	Secondary Platform Channel	102.1 LF	B



**LEGEND**

EX WATER LINE

EX LIDAR CONTOURS (2011)

PR DITCH CLEANING

PR ACCESS CORRIDOR

PR ABANDONED (FILL)

DITCH

PR 3 FT. SECONDARY PLATFORM CHANNEL

PR 4 FT. SECONDARY PLATFORM CHANNEL

PR RIDGE

PR FORESTED AREA

PR HIGH MARSH NOURISHMENT

PR POND/BORROW

EX PHRAG STANDS

EX DUNES

EX SALT FLATS

EX ACCESS ROAD

EX DITCH

100 100 100

**REVISIONS**

BY	NO	REVISIONS	DATE
UT	1	REVISED TABLES AND DETAILS ADDED PERMITTING QUANTITIES APPROX.	12/07/23
UT	2	UPDATED DESIGN TO INCLUDE HUMMOCK ZONE AND EDC DESIGN	03/27/24
UT	3	UPDATED HUMMOCK ZONE DETAIL AND NOTES ADDED NWTWETLAND LIMITS	06/19/24

**SCALE** 1"=50'

**DRAWN BY** JDB/HW

**CHECKED BY** LT

**DATE** 06/19/24 SHEET NO. 06 OF 10

**SALT MAR STARK PROPOSE**



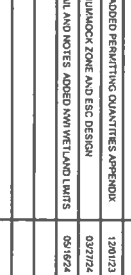
**U.S. FISH AND WILDLIFE SERVICE**  
CHESAPEAKE BAY FIELD OFFICE  
PARTNERS FOR FISH AND WILDLIFE PROGRAM  
177 ADMIRAL COCHRANE DRIVE  
ANNAPOLIS, MD 21401  
TEL: (703) 501-0593



**STRAUGHAN CONSULTING, INC.**  
10245 G.O. COUCHMAN ROAD  
COLLETSVILLE, PA 17034  
TEL: 717-362-2435  
FAX: 717-362-2435  
info@straughanconsulting.com



**SOVEREIGN CONSULTING, INC.**  
1200 MARKET AVENUE, SUITE 100  
HAGERSTOWN, MD 21740  
TEL: 301-671-1800  
www.sovereign.com

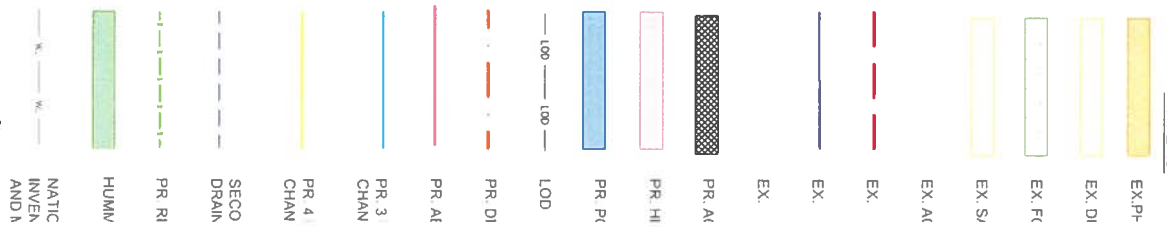


**WESTERN LAND AND RESOURCE DEVELOPMENT COUNCIL, INC.**  
1200 MARKET AVENUE, SUITE 100  
HAGERSTOWN, MD 21740  
TEL: 301-671-1800  
www.wlrc.com





## LEGEND



CH	PROPOSED FEATURES	Quantity	Group
18	Abandoned & Ditch	122 LF	C
20	Secondary Platform Channel	1175 LF	C



SCALE: 1" = 50'

## REVISIONS

BY	NO	REVISIONS	DATE	SCALE
----	----	-----------	------	-------

LT	Δ	REVISED TABLES AND DETAILS. ADDED PERMITTING QUANTITIES. APPENDIX	10/8/20	1"=50'
LT	Δ	UPDATED DESIGN TO INCLUDE HUMWICK ZONE AND EIC DESIGN	03/27/24	
LT	Δ	UPDATED HUMWICK ZONE DETAIL AND NOTES. ADDED NW WETLAND LIMITS	09/16/24	

DATE	09/16/24	SHEET NO	06 OF 10
------	----------	----------	----------

DESIGNED BY	JOB-HM
DRAWN BY	JOB-HM
CHECKED BY	LT

SALT MARSH
STARK
PROPOSE



U.S. FISH AND WILDLIFE SERVICE  
CHESAPEAKE BAY FIELD OFFICE  
PARTNERS FOR FISH AND WILDLIFE  
PROGRAM  
177 ADMIRAL COCHRANE DRIVE  
ANNAPOLIS, MD 21401  
TEL: (703) 501-0593



10415 G.D. COLUMBIA ROAD  
COLUMBIA, MD 21046  
TEL: 301-382-9945  
info@straughanenvironmental.com



50 WEST WELSHPOOL ROAD SUITE 6  
EXTON, PA 19341  
TEL: 610-524-8182  
www.sovereign.com



WESTERN LAND AND RESOURCE  
CONSERVATION AND  
DEVELOPMENT COUNCIL, INC.  
1290 MARION AVE. SUITE 103  
HAGERSTOWN, MD 21740  
TEL: 301-671-1800  
www.westland.org



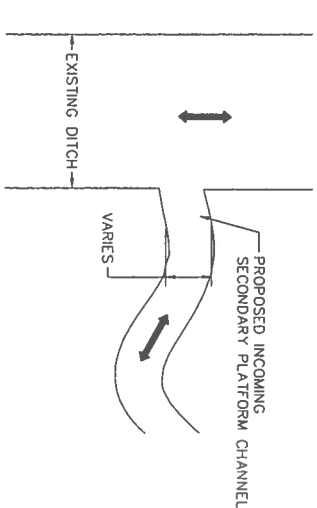




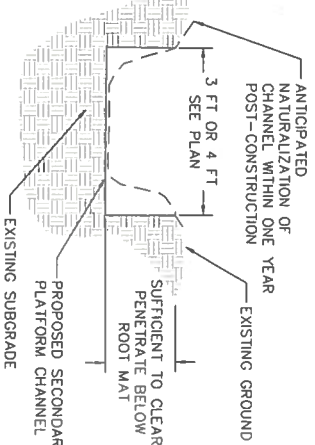
CONSTRUCTION NOTES:

UPLANDS:

1. THE SELECTED CONTRACTOR WILL ACCESS THE SITE GENERALLY FOLLOWING THE FOOTPRINT SHOWN ON THE APPROVED PLANS.
  2. MINOR VARIATION IS PERMITTED DUE TO MICROTOPOGRAPHY, MATURE WOODY PLANT AND LARGE TREE AVOIDANCE, OR SIMILAR.
  3. THE FINAL ACCESS CORRIDOR WILL BE FLAGGED IN THE FIELD AND VERIFIED BY THE USFWS PRIOR TO ANY DISTURBANCE. MINOR GRADING AND THE USE OF MATTING IS PERMITTED.
  4. CLEARING OF HERBACEOUS AND SHRUB GROWTH IS PERMITTED FOR ACCESS CORRIDOR.
  5. LOW SPOTS MAY BE FILLED WITH MUD AND/OR SAND AND SOFT SPOTS CAN BE TEMPORARILY BRIDGED WITH LIGHT-WEIGHT MATTING TO BE LEFT IN PLACE.
  6. AT THE COMPLETION OF THE WORK, ALL DISTURBANCES WILL BE RESTORED, INCLUDING BUT NOT LIMITED TO:  
A. REVEGETATION WITH NATIVE GRASSES, HERBACEOUS PLANTS, AND WOODY PLANTS AS APPROPRIATE RELATIVE TO THE SURROUNDING HABITAT.
  7. ACCESS CORRIDOR MAY REMAIN TO FACILITATE ACCESS FOR SUBSEQUENT ACTIVITIES SUCH AS MONITORING.
  8. MARSHES/NON-TIDAL WETLANDS/WATERS:
1. THE SELECTED CONTRACTOR WILL ACCESS THE SITE GENERALLY FOLLOWING THE FOOTPRINT SHOWN ON THE APPROVED PLANS.
  2. MINOR VARIATION IS PERMITTED DUE TO MICROTOPOGRAPHY, DITCH AVOIDANCE, AND LOW SOFT AREA AVOIDANCE.
  3. THE FINAL ACCESS CORRIDOR WILL BE FLAGGED IN THE FIELD AND VERIFIED BY THE USFWS PRIOR TO ANY DISTURBANCE. THE CONTRACTOR MAY USE MATTING.
  4. NO MATERIAL IS TO BE BROUGHT ON-SITE FOR ACCESS CORRIDOR CONSTRUCTION.
  5. THE CONTRACTOR IS TO WORK FROM THE CHANNELWARD EDGE OF THE ACCESS CORRIDOR BACK TO THE UPLANDS.
  6. AS AN AREA IS COMPLETED AND THE ACCESS CORRIDOR IS NO LONGER REQUIRED, THE MATTING WILL BE REMOVED.
  8. ONCE A MARSH CELL IS COMPLETED, NO FUNCTIONAL ELEMENTS OF THE ACCESS CORRIDOR WILL REMAIN IN THE MARSH CELL.



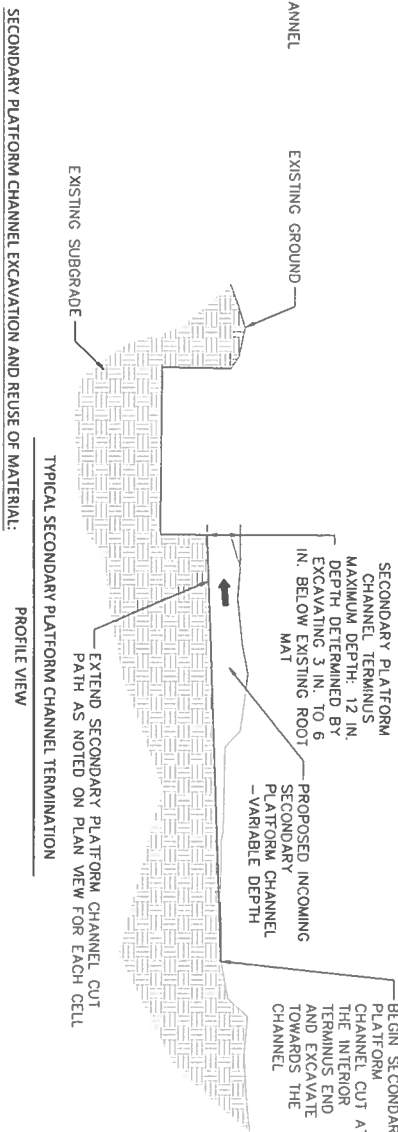
TYPICAL SECONDARY PLATFORM CHANNEL TERMINATION  
PLAN VIEW



TYPICAL SECONDARY PLATFORM CHANNEL TERMINATION  
CROSS SECTION

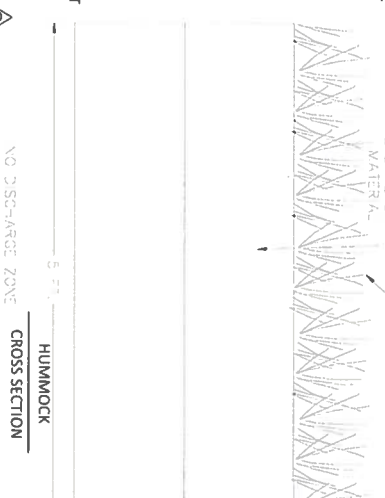
SECONDARY PLATFORM CHANNEL TERMINATION NOTES:

1. CELL TERMINUS OF SECONDARY PLATFORM CHANNEL ELEVATION TO BE EQUAL OR HIGHER THAN CHANNEL CONFLUENCE END.
2. SLOPE WILL BE DETERMINED BY INDIVIDUAL CELL TOPOGRAPHY.
3. THE SQUARE CUT CHANNELS DEPICTED IN THE DETAIL REPRESENTS A CHANNEL CONFIGURATION WHICH IS REALISTIC AND EFFICIENT TO CONSTRUCT USING MOST EXCAVATION EQUIPMENT. HOWEVER, THE ANGULAR EDGES OF THE CHANNEL WILL NATURALLY SOFTEN TOWARDS A SHAPE MORE REPRESENTATIVE OF THE DASHED LINE. THE FINAL SPECIFIC CHANNEL SHAPE WILL BE DETERMINED BY THE HYDROLOGY PASSING IN THE CHANNEL.
4. ONE OF THE DESIGN GOALS IS TO REINTRODUCE A PROPER TIDAL FLUSH IN THE ENHANCED LOW MARSH AREAS. A SECONDARY BENEFIT AND TARGET OF THE MODIFIED CHANNELIZATION IS TO PROMOTE ACCESS OF FISH INTO AND OUT OF THE MARSH, UNLESS NOTED ELSEWHERE IN THESE PLANS, MUDFLAT AREAS WILL NOT BE IMPACTED BY THE PROPOSED WORK.

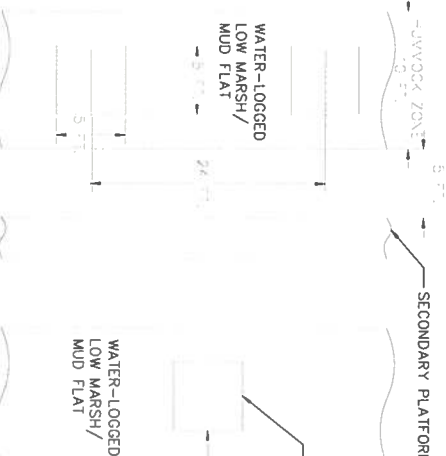


TYPICAL SECONDARY PLATFORM CHANNEL TERMINATION  
PROFILE VIEW

1. SECONDARY PLATFORM CHANNEL EXCAVATION AND REUSE OF MATERIAL:
2. SECONDARY PLATFORM CHANNEL PLACEMENT AND WIDTHS WERE DESIGNED BASED ON AVERAGE OF WATERLOGGED CELLS, TIDAL RANGES, TIDAL ELEVATIONS, AND CELL PLATFORM ELEVATIONS FOR THE PURPOSE OF IMPROVING MARSH PLATFORM TIDAL FLUSH.
3. CHANNEL CONFIGURATIONS ARE DEPICTED ON SHEET 3. DETAIL TYPICALS ARE PROVIDED ON SHEET 4.
4. PRIOR TO EXCAVATION:  
A. THE PRIMARY ACCESS ROUTE(S) INTO THE MARSH WILL BE FINALIZED IN THE FIELD;  
B. CENTRILINE OF SECONDARY PLATFORM CHANNELS WILL BE STAKED; AND  
C. THE ORDER OF CELL SECONDARY PLATFORM CHANNEL EXCAVATION WILL BE IDENTIFIED IN THE FIELD RELATIVE TO THE ORDER NOTED ON THE PLANS.
5. THE USFWS WILL APPROVE THE FINAL STAKE OUT AND MAKE ADJUSTMENTS AS NECESSARY BASED ON SITE CONDITIONS.
6. SECONDARY PLATFORM CHANNEL EXCAVATION WILL BEGIN AT THE INTERIOR TERMINUS OF THE SECONDARY PLATFORM CHANNEL AND WORK OUT TOWARD THE CHANNEL CONFLUENCE.
7. ALL EXCAVATION MUST EXTEND 3 TO 6 INCHES BELOW ANY LIVE ROOT MAT. PEAT LAYERS ARE NOT TO BE ASSUMED TO BE LIVE ROOT MATS.
8. THE INTERIOR TERMINUS END OF THE SECONDARY PLATFORM CHANNEL MUST BE AT LEAST 6 INCHES DEEP +/- 2 INCHES.
9. CHANNEL WIDTHS ARE DENOTED ON THE PLAN VIEW.
10. EXCAVATED MATERIAL WILL BE EITHER:  
A. PLACED IN AN EXISTING DITCH IDENTIFIED TO BE FILLED; OR  
B. USED FOR HUMMOCK CREATION (TYPICAL HEIGHT = 17 INCHES ABOVE MHW & MINIMUM ELEVATION = 1.8' NAVD83).
11. ANY EXISTING DITCH IDENTIFIED TO REMAIN AND IS PART OF A SECONDARY PLATFORM CHANNEL FLUSH CONFIGURATION IS TO BE INSPECTED AND CLEANED OUT AS NECESSARY TO NOT MORE THAN 3 INCHES BELOW THE MLW ELEVATION.
12. HISTORIC AND READILY OBSERVABLE VIA AERIAL PHOTOGRAPHY DITCHES HAVE BEEN DENOTED ON THE PLAN AS RED DASHED LINES. THE RED DASHED LINE DOES NOT INDICATE THE LEVEL OF FLOW/FUNCTION WITHIN THE DITCHES. CERTAIN DITCHES IDENTIFIED MAY BE FULLY FUNCTIONAL, PARTIALLY FUNCTIONAL, OR COMPLETELY DYSFUNCTIONAL. ALL THE DITCHES WERE FURTHER EVALUATED VIA ADDITIONAL AERIAL PHOTOGRAPHIC REVIEW AND/OR ON-SITE INSPECTIONS. IDENTIFIED DITCHES WERE EITHER LEFT UNDISTURBED, CLEANED OUT, OR PLUGGED.
13. DURING SECONDARY PLATFORM CHANNEL EXCAVATION, A SPOTTER WILL BE PRESENT WITH A ROD AND LASER LEVEL TO ASSIST THE OPERATOR WITH DITCH ELEVATIONS.
14. USFWS PERSONNEL WILL MONITOR CONSTRUCTION AND COLLECT AS-BUILT SURVEY DOCUMENTATION TO CONFIRM AND DOCUMENT FINAL DITCH CONFIGURATIONS.
15. POST CONSTRUCTION, CERTAIN SECONDARY PLATFORM CHANNELS MAY NATURALLY FILL OR SCOUR WHILE REACHING A STABLE CONDITION. THIS IS TO BE ALLOWED TO OCCUR. THE USFWS WILL MONITOR AND ASSESS FOR ASSOCIATED RISKS WITH SIGNIFICANT STORM EVENTS OR UNUSUAL FLOODING EVENTS, MAY REQUIRE MAINTENANCE DURING YEAR 1 POST CONSTRUCTION.



TYPICAL SECONDARY PLATFORM CHANNEL TERMINATION  
CROSS SECTION



TYPICAL SECONDARY PLATFORM CHANNEL TERMINATION  
PLAN VIEW



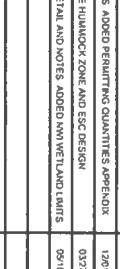
U.S. FISH AND WILDLIFE SERVICE  
CHESAPEAKE BAY FIELD OFFICE  
PARTNERS FOR FISH AND WILDLIFE  
PROGRAM  
177 ADMIRAL COCHRANE DRIVE  
ANAPOLIS, MD 21401  
TEL: (703) 501-0593



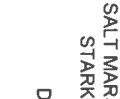
STRAUGHAN  
1000 S. OLD COAST ROAD  
ANAPOLIS, MD 21401  
TEL: (703) 501-0593  
FAX: (703) 501-0593  
www.straughan.com



SOVEREIGN  
CONSULTING  
INC.  
1250 W. 10TH AVE. SUITE 100  
DENVER, CO 80202  
TEL: (303) 733-1111  
FAX: (303) 733-1111  
www.sovereign.com

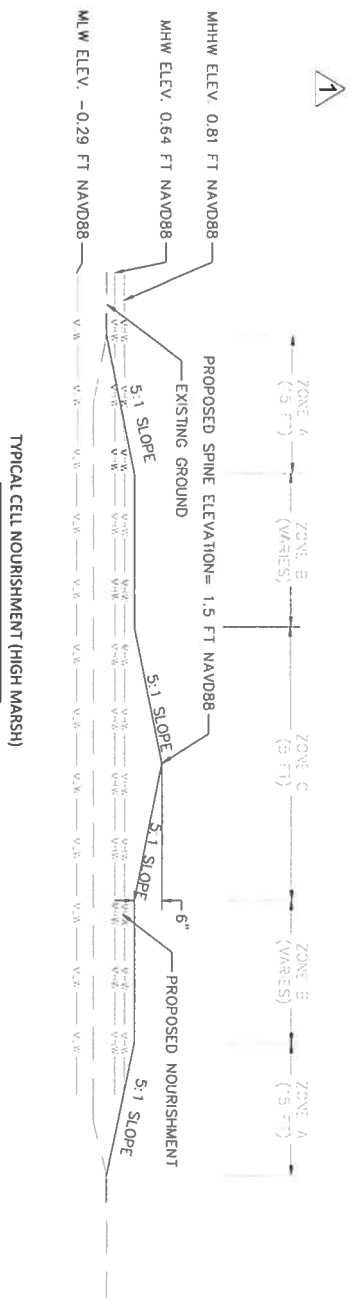


WESTERN WATER AND RESOURCE  
CONSULTING, INC.  
1250 W. 10TH AVE. SUITE 100  
DENVER, CO 80202  
TEL: (303) 733-1111  
FAX: (303) 733-1111  
www.western.com

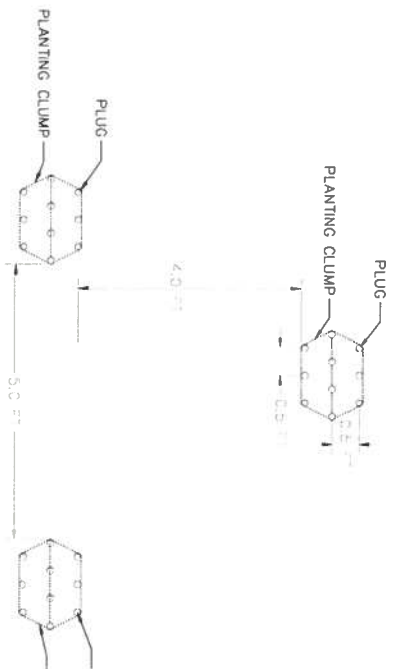


SALT MARSH  
1250 W. 10TH AVE. SUITE 100  
DENVER, CO 80202  
TEL: (303) 733-1111  
FAX: (303) 733-1111  
www.saltmarsh.com





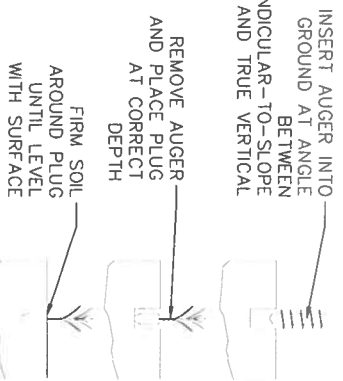
TYPICAL CELL NOURISHMENT (HIGH MARSH)  
CROSS SECTION



LOW MARSH PLANTING CLUSTERS  
PLAN VIEW  
1. ALL PLANTS IN LOW MARSH CLUSTERS WILL BE SPARTINA ALTERNIFLORA.

- CELL NOURISHMENT AND FILL:**
- PLACE FILL MATERIALS PER DETAIL. SEE SECONDARY PLATFORM NOT EXCEED 1' BEYOND CHANNEL EXCAVATION NOTES FOR INSTALLATION.
  - CELLS RECEIVING FILL WILL TARGET ELEVATION 1.20 FT NAVD88 GRADED AT A 5:1 SLOPE. FINAL ELEVATION AFTER SETTLEMENT WILL BE 1.00 FT NAVD88.
  - SHALL PROVIDE POSITIVE SURFACE DRAINAGE OFF OF THE PLATFORM AND PROVIDE SECONDARY BENEFIT OF ADDITIONAL MARSH VEGETATION ELEVATION BASED UPON SURVEY OF EXISTING MARSH, DATED 4/29/22.
- CELL NOURISHMENT PLANTING:**
- ZONE A REPRESENTS A 15 FT BAND AROUND THE OUTER EDGE OF THE NOURISHED PORTION OF THE CELL.
  - ZONE B REPRESENTS THE AREA WITHIN THE BASE OF THE TOE OF THE SPINE.
  - ZONE C REPRESENTS THE REMAINDER OF THE AREA.

ABANDONED (FILL) DITCH  
CROSS SECTION



TYPICAL PLUG PLANTING  
CROSS SECTION

**PLANTING NOTES:**

- INSTALL PLANTINGS PER DETAIL.
- SINK AUGER INTO THE GROUND 2 INCHES DEEPER THAN PLUG ROOT LENGTH.
- PROVIDED PLUG HOLE IS NOT INUNDATED 1/3 TEASPOON OF SLOW RELEASE FERTILIZER MAY BE PLACED AT BOTTOM OF HOLE BEFORE PLUG PLACEMENT. PLANT SUPPLIER MAY RECOMMEND OR SUPPLY FERTILIZER.
- PLUGS ARE TO BE PLANTED WITH TOP OF ROOT PLUG EVEN WITH OR SLIGHTLY BELOW SUBSTRATE SURFACE. IN SOFTER SEDIMENTS OR IN HIGHER ENERGY AREAS, ROOT PLUG SHOULD 1 OR 2 INCHES BELOW SUBSTRATE SURFACE. NEVER EXTENDING ABOVE SUBSTRATE SURFACE.
- LOW MARSH PLANT CLUSTERS ARE TO BE SPACED AS SHOWN IN THE DETAIL.
- CELL NOURISHMENT PLUGS ARE TO BE PLANTED IN CLUSTERS OF FIVE AT SPACING SPECIFIED IN TABLE.
- CELLS WITH SECONDARY PLATFORM CHANNEL CREATION WILL BE PLANTED AS LOW MARSH AND CELLS WITH NOURISHMENT WILL BE PLANTED AS HIGH MARSH.

CELL NOURISHMENT PLANTING PLAN (HIGH MARSH)			
ZONE	SCIENTIFIC NAME	COMMON NAME	BREAKDOWN
A	SPARTINA PATENS	SALTY MEADOW HAY	75%
	DISTICHILIS SPICATA	SEAGRASS	25%
B	SPARTINA PATENS	SALTY MEADOW HAY	75%
	DISTICHILIS SPICATA	SEAGRASS	25%
C	SPARTINA PATENS	SALTY MEADOW HAY	75%
	DISTICHILIS SPICATA	SEAGRASS	25%



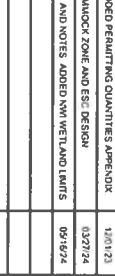
U.S. FISH AND WILDLIFE SERVICE  
CHESAPEAKE BAY FIELD OFFICE  
PARTNERS FOR FISH AND WILDLIFE  
PROGRAM  
177 ADMIRAL COCHRANE DRIVE  
ANNAPOLIS, MD 21401  
TEL: (703) 501-0593



10345 OLD COALBURN ROAD  
ANNAPOLIS, MD 21401  
TEL: 301-262-9245  
FAX: 301-262-9245  
www.straughaninc.com



50 WEST WISCONSIN ROAD, SUITE 6  
ESTON, PA 19344  
TEL: 717-326-1314  
www.sovereign.com



1260 WYANDALE AVE, SUITE 100  
HAGERSTOWN, MD 21740  
www.wmrcd.org

SALT MAR  
STARK  
PLANT





Cell	Proposed Feature	Phase	Cut Volume (CY)
2	Secondary Platform Channel	A	9
4	Secondary Platform Channel	A	25
6	Secondary Platform Channel	A	13
8	Secondary Platform Channel	A	21
10	Secondary Platform Channel	A	13
14	Secondary Platform Channel	B	31
15	Secondary Platform Channel	B	25
16	Secondary Platform Channel	B	24
17	Secondary Platform Channel	B	11
20	Secondary Platform Channel	C	14
23	Secondary Platform Channel	D	19
27	Secondary Platform Channel	D	10
TOTAL	Secondary Platform Channel		258

Cell	Proposed Feature	Phase	Fill Volume (CY)
2	Plug	A	14
4	Plug	A	21
5	Plug	A	39
6	Plug	A	188
7	Plug	A	77
8	Plug	A	53
14	Plug	B	102
10	Plug	A	78
12	Plug	A	64
13	Plug	B	56
15	Plug	B	47
16	Plug	B	137
18	Plug	C	48
23	Plug	D	35
24	Plug	D	54
TOTAL	Plug		1013

Cell	Proposed Feature	Phase	Fill (CY)
5	Nourishment	A	
6B	Nourishment	A	
6C	Nourishment	A	
7A	Nourishment	A	
7B	Nourishment	A	
14B	Nourishment	B	
8B	Nourishment	A	
9	Nourishment	A	
12	Nourishment	A	
13	Nourishment	B	
14	Nourishment	B	
25	Nourishment	D	
TOTAL	Nourishment		

FOR INFORMATION PURPOSES ONLY  
NOT FOR CONSTRUCTION



U.S. FISH AND WILDLIFE SERVICE  
CHESAPEAKE BAY FIELD OFFICE  
PARTNERS FOR FISH AND WILDLIFE  
PROGRAM  
177 ADMIRAL COCHRANE DRIVE  
ANNAPOIS, MD 21401  
TEL: (703) 501-0593



STRAUGHAN  
ENVIRONMENTAL  
10745 D.L.D. COLIMIA ROAD  
SUITE 100  
FARMERSVILLE, OH 43026  
TEL: 301-362-9200  
FAX: 301-362-9245  
info@straughanenvironmental.com



SOVEREIGN  
CONSULTING  
INC.  
SCIENCE SERVICE SOLUTIONS  
50 WEST WELSH POOL ROAD SUITE 6  
EXTON, PA 19341  
TEL: 610-381-1212  
www.sovereign.com



THINKSCAPE  
WESTERN MARY AND RESOURCE  
CONSERVATION AND  
DEVELOPMENT COUNCIL, INC.  
1760 MARYLAND AVE. SUITE 100  
HAGERSTOWN, MD 21740  
TEL: 410-326-1800  
www.thinkscapemary.com

BY		NO		REVISIONS		DATE	SCALE	NTS
L1		Δ		REVISED TABLES AND DETAILS ADDED PERMITTING QUANTITIES APPENDIX.		12/01/23		
L1		Δ		UPDATED DESIGN TO INCLUDE HUMMOCK ZONE AND ESC DESIGN		03/27/24	DESIGNED BY	JOB/NA
L1		Δ		UPDATED HUMMOCK ZONE DETAIL AND NOTES ADDED NM WETLAND LIMITS		06/16/24	DRAWN BY	JOB/NA
							CHECKED BY	L1

DATE: 03/16/24 SHEET: NO. 01 OF 01

SALT MAR  
STARK  
PERMI