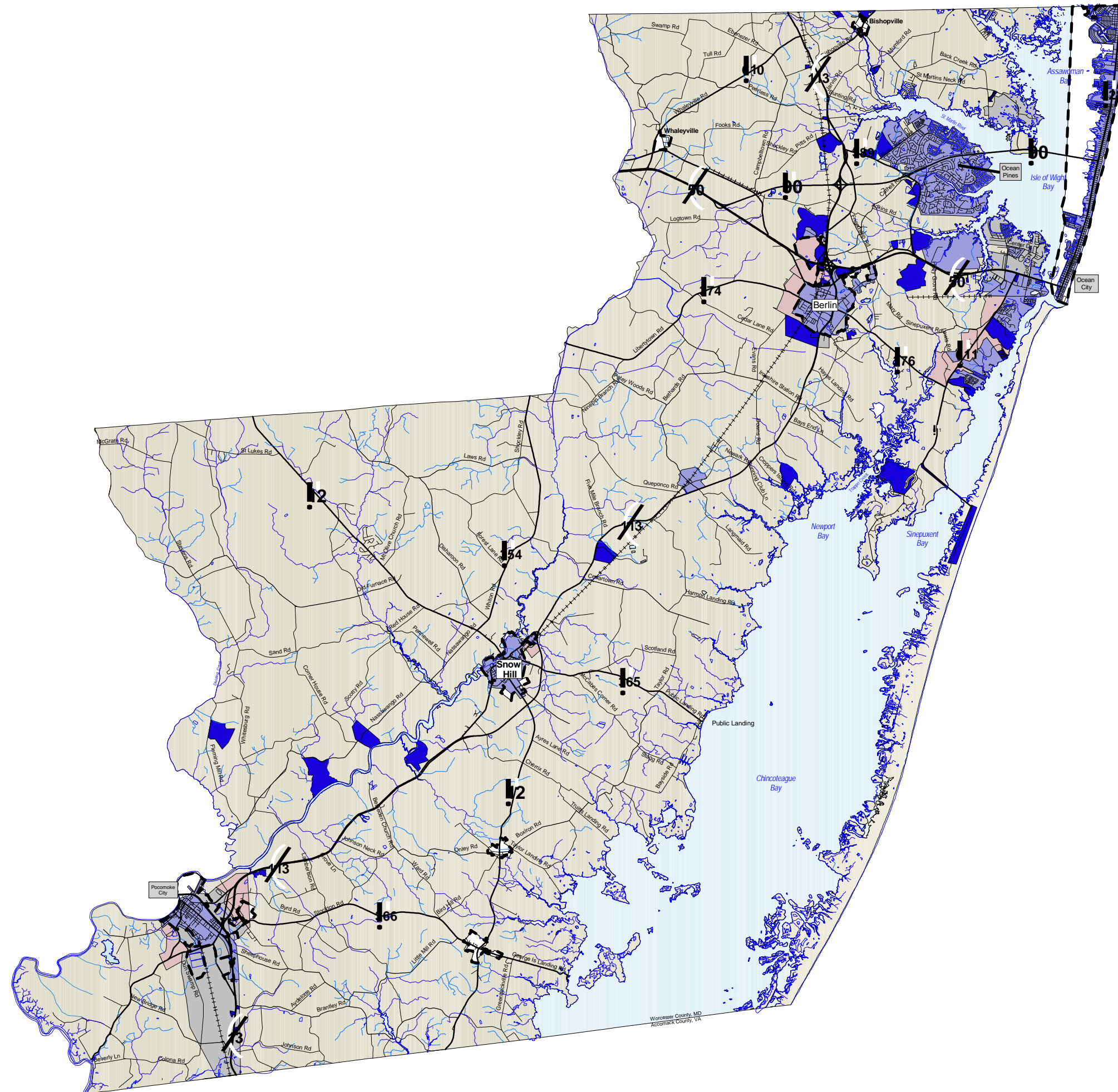


# Worcester County Maryland Water Service Areas

Map prepared by the Worcester Regional GIS Program, November 2003.

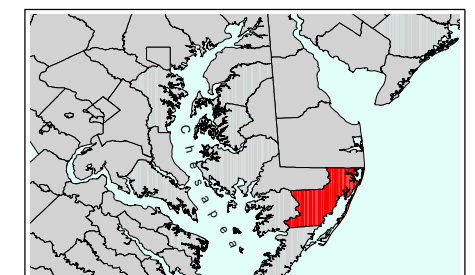
Source: Worcester County Department of Comprehensive Planning, November 2003.

**This map is intended to be used for planning purposes only and not for regulatory application.**



## Legend

- S1 - Present to 2 years
- S2 - Future Service (3 to 5 years)
- S3 - Future Service (6 to years)
- MUS - Multi-Use Systems



0 2 4 Miles

