

Worcester County Maryland

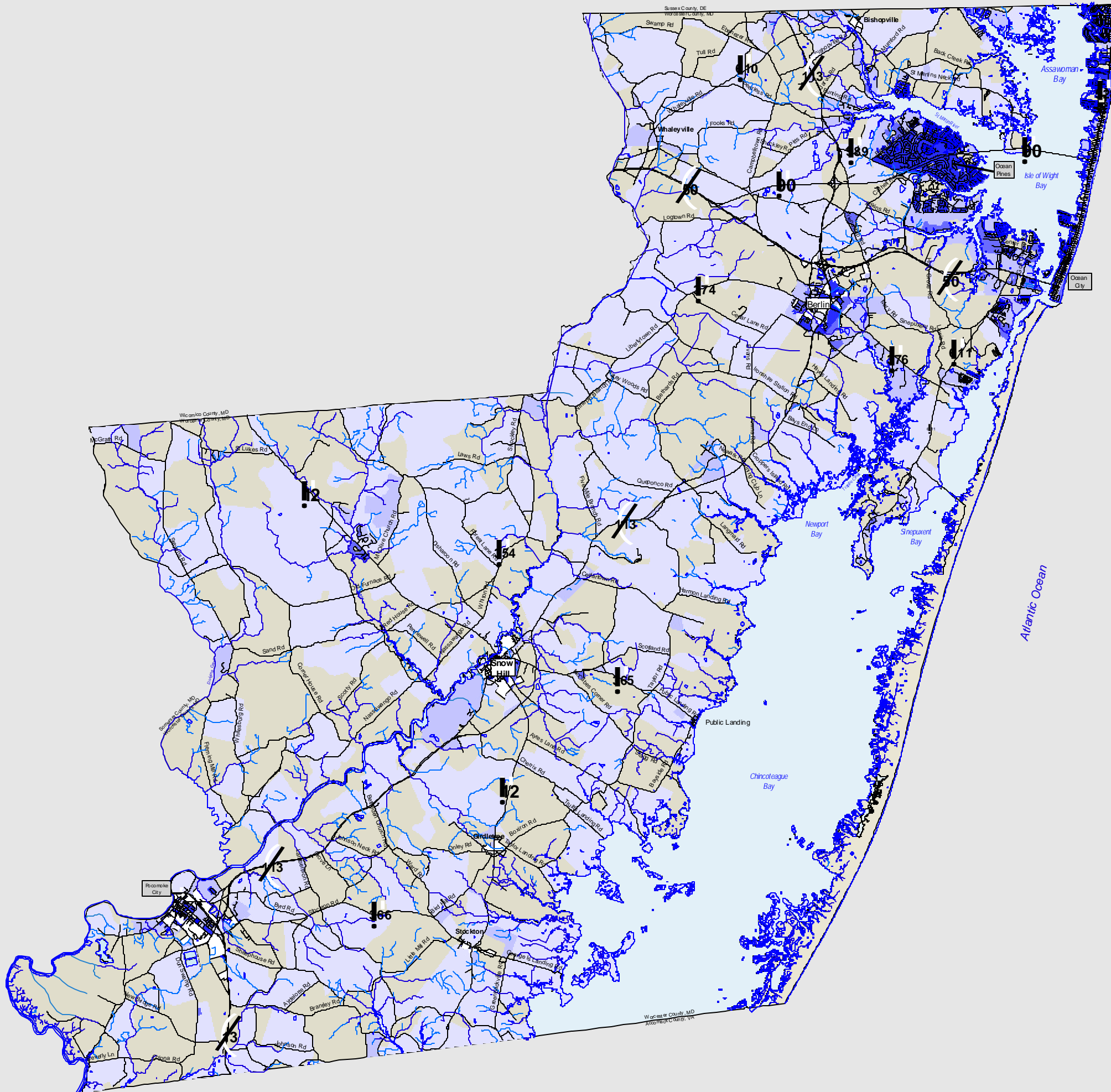
2000 Population Density

*Total Population - 46,543

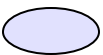







Map prepared by the Worcester Regional GIS Program, June 2003.
Source: Maryland Propertyview, 2002.

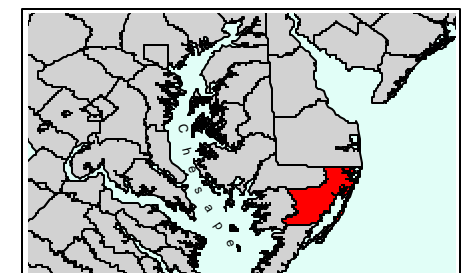
**This map is intended to be used for planning purposes only
and not for regulatory application.**

This map represents population density (persons per acre) from the 2000 U.S. Census of Population and Housing. Density was calculated from populations reported at the 2000 Census Block level. Census data was provided by Caliper Corporation.



2000 Population Density (Persons per Acre)

-  0 - 0.001
-  0.001 - 0.5
-  0.101 - 0.5
-  0.501 - 1
-  1.01 - 5
-  5.01 - 10
-  10.001 - 20
-  20.01 - 85



0 2 4 Miles

