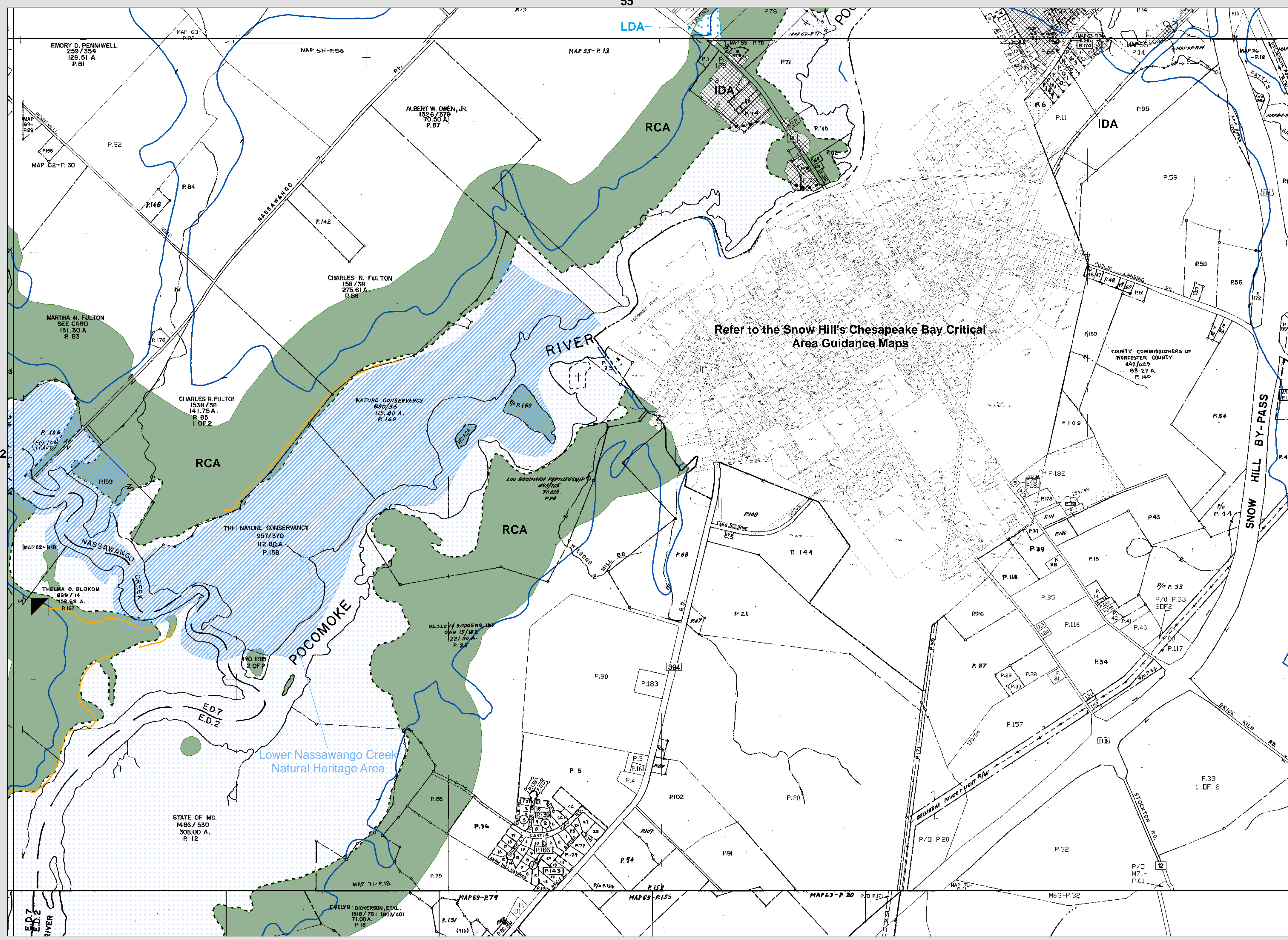


Worcester County Chesapeake Bay Critical Area Guidance Map



LEGEND

Worcester County Chesapeake Bay Critical Area Guidance Map Boundaries

- IDA - Intensely Development Area
- LDA - Limited Development Area
- RCA - Resource Conservation Area
- Tidal Wetland Boundary
- State-designated Natural Heritage Area
- State-designated Habitat Protection Area
- 100 - Year Floodplain Boundary
- Threatened and endangered species and species in need of conservation, within Critical Area
- County steep slope data within Critical Area
- Soil Survey Geographic data base (SSURGO) Steep Slope data within Critical Area

Threatened and Endangered Species data, County Steep Slopes, State-designated Natural Heritage and Habitat protection areas were provided by Worcester County Comprehensive Planning Department.

SSURGO steep slope data set was provided by the U.S. Department of Agriculture, Natural Resource Conservation Service, SSURGO data set published in 1998. (Only Steep Slopes shown within the Critical Area are depicted.)

Floodplain data - Published in 1995 by the Federal Emergency Management Agency

These maps are designed for use as a planning tool and not a primary regulatory tool. The information shown is a compilation from various information sources and maps. Field verification will be required.

The Worcester County Critical Area Boundary was established by Worcester County in compliance with the 1984 Critical Area Law. This data set was reviewed, updated and converted to digital format by the MD Critical Area Commission, Maryland Department of Natural Resources and the Worcester Regional GIS Program.

The tidal wetland boundary lines depicted on this map are for guidance purposes only. The State of Maryland does not recognize these boundaries as its official Tidal Wetlands boundaries in Worcester County. Maps depicting the State's regulatory jurisdictions may be viewed by contacting the Worcester County Department of Development Review and Permitting.

The first 100' landward measured from mean high water line tidal waters, tidal wetlands, and tributary streams is called "THE BUFFER". No alterations, vegetation removal, grading, paving, or building can take place within "THE BUFFER". The line 100' landward is not mapped hereon. A field survey may be required to accurately establish the line. See program for additional information.

Tax maps provided by the Maryland Department of Planning, 2002.

Map prepared by the Worcester County Regional GIS Program, June 2003. Map revised by the Worcester County Department of Comprehensive Planning, November, 2006.

Adopted by the Worcester County Commissioners, September 2, 2003.

Tax Map

63

0 590 1,180 Feet
1 inch = 600 ft.