

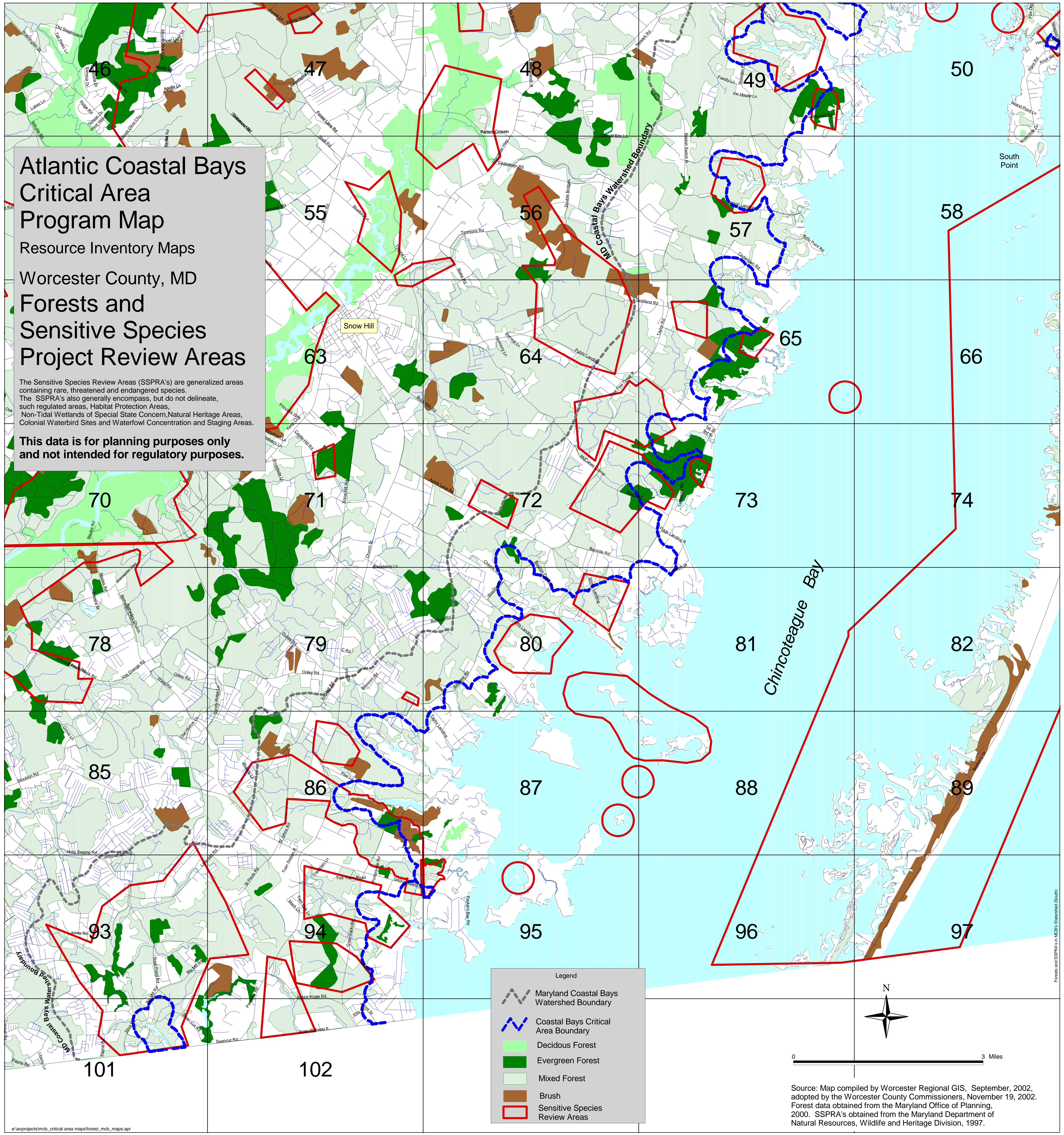
# Atlantic Coastal Bays Critical Area Program Map

## Resource Inventory Maps

### Worcester County, MD Forests and Sensitive Species Project Review Areas

The Sensitive Species Review Areas (SSPRA's) are generalized areas containing rare, threatened and endangered species. The SSPRA's also generally encompass, but do not delineate, such regulated areas, Habitat Protection Areas, Non-Tidal Wetlands of Special State Concern, Natural Heritage Areas, Colonial Waterbird Sites and Waterfowl Concentration and Staging Areas.

**This data is for planning purposes only  
and not intended for regulatory purposes.**



**Legend**

- Maryland Coastal Bays Watershed Boundary
- Coastal Bays Critical Area Boundary
- Deciduous Forest
- Evergreen Forest
- Mixed Forest
- Brush
- Sensitive Species Review Areas

Source: Map compiled by Worcester Regional GIS, September, 2002, adopted by the Worcester County Commissioners, November 19, 2002. Forest data obtained from the Maryland Office of Planning, 2000. SSPRA's obtained from the Maryland Department of Natural Resources, Wildlife and Heritage Division, 1997.