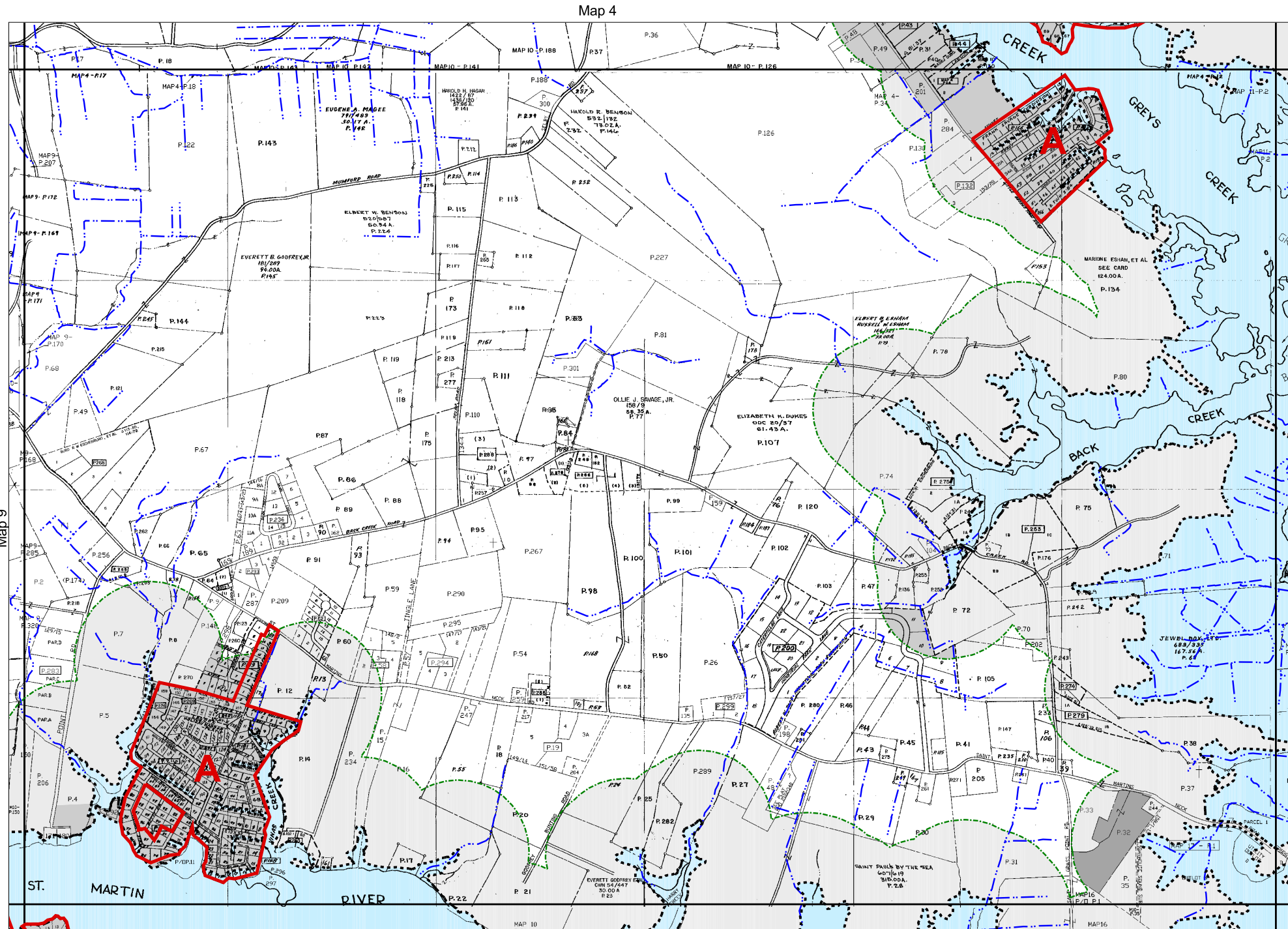


# Atlantic Coastal Bays Critical Area Program

## Buffer Management Area

### Map Sheet 10

Buffer Management Area Tax Map 10



**Legend**

- A Buffer Area Management Designation
- IDA - Intensely Developed Areas
- LDA - Limited Development Areas
- RCA - Resource Conservation Areas
- Initial Development Exempt From Program  
(Color under cross hatching indicates the land classification)
- Out of Program
- Tidally Influenced Areas  
(Open Water and Tidal Marsh)
- ~ Streams

The Worcester County Critical Area Boundary was established by Worcester County in compliance with the Atlantic Coastal Bays Protection Act. This data set was reviewed, updated and converted to digital format by the Maryland Department of Natural Resources and the Worcester Regional GIS Program.

The tidal wetland boundary lines depicted on this map are for guidance purposes only. The State of Maryland does not recognize these boundaries as its official Tidal Wetlands boundaries in Worcester County. Maps depicting the State's regulatory jurisdictions may be viewed by contacting the Worcester County Department of Development Review and Permitting.

The first 100' landward measured from mean high water line to tidal waters, tidal wetlands and tributary streams is called "THE BUFFER". No alterations, vegetation removal, grading, paving or building can take the place within "THE BUFFER", without additional approvals. The line 100' landward is not mapped hereon. A field survey may be required to accurately establish this line. See program for additional information.

These maps are designed for use as a planning tool and not a primary regulatory tool. The information shown is a compilation from various information sources and maps. Field verification will be required.



**This Box Represents Twenty Acres**

Source: Worcester Regional GIS, 2002. Stream data provided by the USDA Natural Resource Conservation Service (NRCS), 1997. Adopted by Worcester County Commissioners, November 19, 2002.

Buffer Management Area Tax Map 10

wrgis/projects/wcp/critical\_area/buffer\_mgmt\_area.apr